



**CELEBRATING EXCELLENCE IN WOOD STRUCTURES**  
2009-10 NORTH AMERICAN WOOD DESIGN AWARD WINNERS



## TRADITIONAL USE OF WOOD Award

Originally planned as a remodelling project, the owners of the Silver Oaks Cellars decided to start fresh with a new campus after a devastating flood and fire in 2006. The new 65,000-sq.ft. winery was completed in the fall of 2008.

# Silver Oak Cellars

Taylor Lombardo Architects

The goal was to develop a winery that incorporated the heritage and brand values of Silver Oak Cellars with a state-of-the-art facility. Inspired by a Napa Valley vernacular, the project also incorporates sustainable design, multifunctional spaces and a focus on overall efficiency.

The 20,000-sq.ft. hospitality building and tasting room were designed to serve the public and act as a focal point for the entire campus. Accommodating up to 700 visitors per day, the flexible and functional design provides workspace for employees and allows for numerous, large-scale events to be hosted each year.

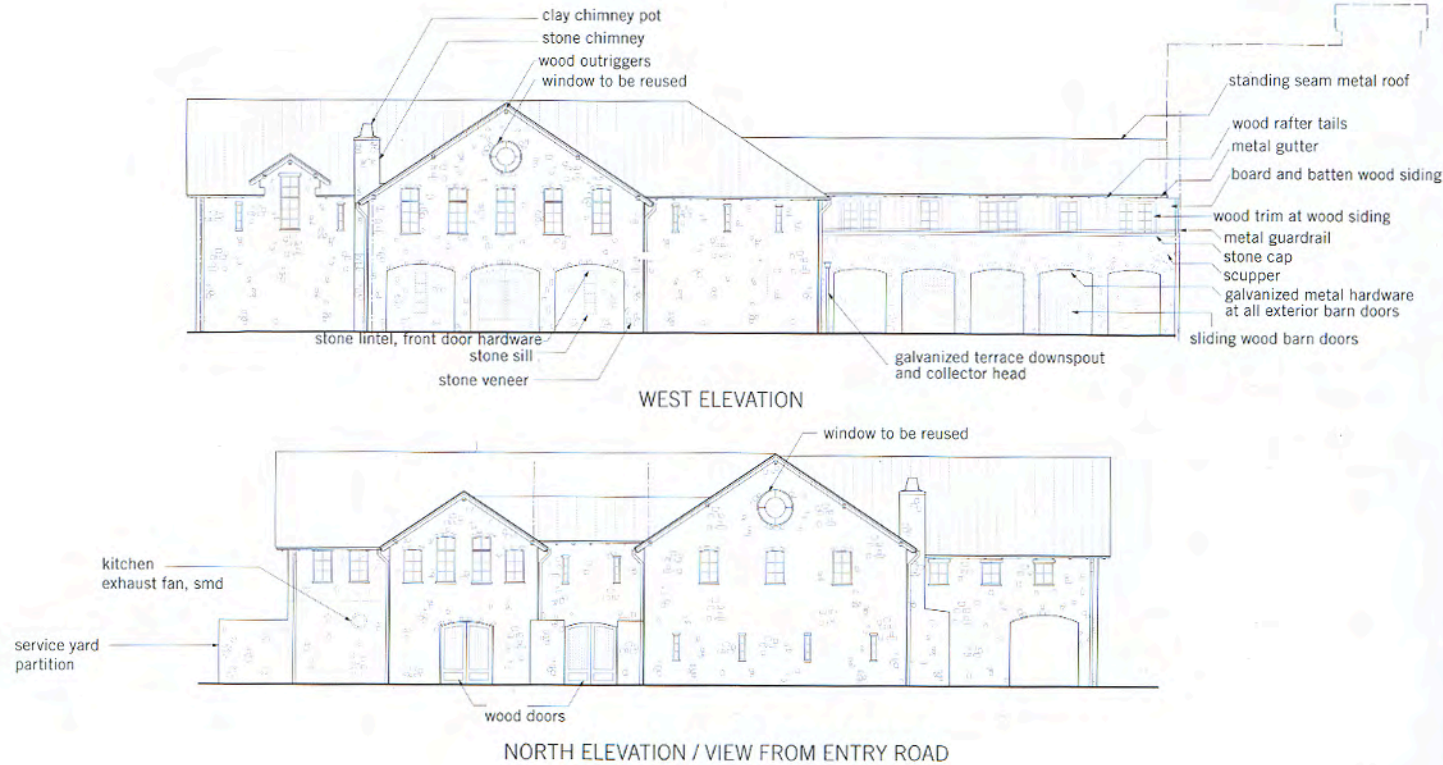
Several multifunction rooms were created to combine space, improve personnel efficiency, and reduce material and energy usage. Reclaimed

materials were chosen for their aesthetic and old-world feel, as well as their life cycle and sustainability. Materials include limestone from an abandoned flour mill that was slated to be destroyed, as well as oak wood reclaimed from a dilapidated barn built in the 1820s. The history gallery is lined with redwood salvaged from the original tasting room and features the original front doors.

The hospitality building's roof system is one of the main architectural features of the building. Built using traditional mortise-and-tenon timber framing, the design criteria created challenges for both the structural engineers and the framers. Six heavy timber scissor trusses were used as the main roof supports. Each truss had unique structural conditions,







connecting to different wall or beam types. These massive trusses, which span 40 ft., are comprised of 12 x 17 rafters, 10 x 12 cords, and a 12 x 12 king post, with all traditional joinery. The exposed truss system creates the ceiling for the tasting room, the glass wine room, the conference room, and the reception area. At the top of the trusses are the ridge beams, purlins and wind braces that carry the 3 x 5 common rafters which were installed flat. The rafters are modeled after European

tithe barns of the 14th and 15th centuries. Douglas fir was selected for all of the timber. Adjacent to the tasting room is a 30-ft. tall barrel chai (wine barrel storage room). The chai also has custom timberwork, which is comprised of a four-sided hipped beam roof structure with a central kingpin. One-inch-diameter steel tie rods connect the wood members to form a two-way bow-string truss. The four-sided roof structure and bent frames were

assembled outside the building and later craned into the concrete block structure in one piece. The new Silver Oak Cellars Winery now delivers a visual experience to match its world-class wines. The sustainable design introduces modernization in energy efficiency, water conservation, and material recycling, while creating a timeless architectural design that pays homage to Silver Oak's heritage.



CLIENT  
Silver Oak Winery  
Oakville, CA

ARCHITECT  
Taylor Lombardo LLP  
San Francisco, CA

STRUCTURAL ENGINEER  
Hohbach-Lewin  
San Francisco, CA

GENERAL CONTRACTOR  
Cello & Maudru Construction  
Napa, CA

TIMBER FRAMING  
Timber Creations  
Santa Rosa, CA

PHOTOGRAPHY  
Adrian Gregorutti  
San Francisco, CA

